



CRUZIANA

GEOPARK NATURTEJO DA MESETA MERIDIONAL-EUROPEAN AND GLOBAL GEOPARK - MONTHLY REPORT

In this issue: – Naturtejo and Oleiros prepare for Trans-Pangaea in Canada – Archaeological summer camp: one month and new findings – Talk at Proença-a-Nova downtown – New company Geolife on the way – Gold for everybody in the Geology in Summer...and more!



Olá/Hola/Ciao/Bonjour/Γειά σου/Hallo/God Dag/Salut/Zdravo/Hello/Ahoj/Helo/Helló/ Hei/
Dia duit/Bok/Kaixo/Pozdravljeni/Czesc/Halló/Merhaba

Geo-stories of our places and people: Cambas

Cambas is the Zêzere River. The name itself deceives no one and reveals its geomorphological position in both of the immense riverbanks: Cambas is located in one of the multiple gigantic meanders that define the Middle Zêzere in its deep valley, entrenched between the schist mountains. Orlando Ribeiro describes this area of fluvial greatness as: "The quartzite bar of Orvalho splits, however, two types of landscape. Upstream, by influence of the double rock threshold composed by the referred crests, developed meanders "of hardness", dissymmetric, formed or increased during the fitting, a multiplicity of levels mark the local breaks of the river deepening. Downstream, dominate the "entrenched" meanders, derived from free meanders that afterwards fitted themselves without or with little ulterior development, therefore symmetrical or almost symmetrical. In addition to these harmonious forms, can also be noticed sinuosity with severe traces, which seem oriented by transversal fractures". At the back of the municipality, beyond Admoço arise the quartzite crests matching the river, rising 350m from the depths, whose 100 m are almost vertical, a "Nature wonder, worth to be admired", already mentioned by the Bishop of Angra in the last quarter of the 19th century. Here, the river "cuts" the extremely hard rock through a stronger or weaker overwhelming strength with the climatic changes of the past, curbed ahead by the Cabril Dam nowadays, but also was what carved these two geomonuments of the Naturtejo Geopark: the Gorge and the Meanders of the Zêzere River. Another geosite worth to emphasize shows itself in the path that connects Admoço to Janeiro de Baixo. Here we will find Ordovician rocks with 445 million years that testify an oceanic sedimentary origin for all the rocks that form Cambas landscape, these ones in particular showing that in a remote past, in this area, once floated icebergs of another Ice Age.

The Cambas universe spreads itself in 47,35km², for 10 villages and 15 places, making a total of 309 inhabitants. From those, stand out the riverside villages of Cambas, Admoço and Caneiros. In Cambas, from the existent heritage is worth to mention the recent restoration works in the Old Church of S. João Baptista. What prevails, from space and history is the riverside area. "The river has in that place the best port of them all, for there's no danger at all even with the biggest floods" as the Bishop of Agra described to us. Nowadays we find a small weir, an image of the village perched in the higher grounds of the river and the River Beach, well equipped. For the more adventurous, we find a savage beach where there are yet some typical boats and where the summer camps or fisheries are frequent. Moreover, the small section between Janeiro de Baixo and Cambas, one of the few river sections that remain savage, is appreciated for the initiation to the white waters. We cannot forget that this small natural resort, but with great importance for the region and for Naturtejo Geopark, was close to be sunk by the construction of a mini-hydro in Admoço. Due to the selflessness of the investors concerning the demands of mitigation and environmental concerns pointed by the Geopark management team and declared by the Environment Agency, the project ended up by not being implemented.



**Olá/Hola/Ciao/Bonjour/Γειά σου/Hallo/God Dag/Salut/Zdravo/Hello/Ahoj/Helo/Helló/ Hei/
Dia duit/Bok/Kaixo/Pozdravljeni/Czesc/Halló/Merhaba**

The Great Zêzere Trail follows nowadays, and for that reason, the right riverbank towards Cambas. Here we can exchange our bicycle for a kayak that will take us, by the river, to Álvaro. Another hiking trail goes through the Zêzere Gorge, coming from Janeiro de Baixo. The future of Cambas includes valuing the riverside area of the great winding river, throughout the appreciation projects of the natural resources and the cultural heritage connected to Zêzere, the strategic touristic exploitation of the typical riverside villages and the water mirror created by the Cabril Dam, as well as the overwhelming natural landscapes and the white waters of the Zêzere Gorge. A festival in the banks of the great river, uniting the riverside parishes of Oleiros, could congregate nature and culture under the brand of Zêzere in a great summer event.

References

Neto de Carvalho, C., Rodrigues, J.C. & Gonçalves, D. 2013. Património Geológico de Oleiros: inventário de geossítios e propostas para a sua valorização. Açafa On-line, 6, 4-61.

Martins, M.C.A. 2011. Caneiros: modos de vida e saúde. Açafa On-Line, 4, 188p.

Pimentel, J.M.P.A. 1881. Memórias da Villa de Oleiros e do seu concelho. Typographia da Virgem Immaculada, Angra do Heroísmo, 358pp.

Ribeiro, O. 1949. O fosso do Médio Zêzere. Comunicações dos Serviços Geológicos de Portugal, XXX, 79-85.

The Editor
Carlos Neto de Carvalho
Scientific Coordinator
Geologist

Front page: (Objectiva: Geopark Project)

ACTIVITIES OF THE MONTH



28 July to 10 August – Summer animation of Termas de Monfortinho. More 15 days of leisure at Termas de Monfortinho thermal spa provided by the Municipality of Idanha-a-Nova with the support of Naturtejo, coordinated by Nuno Capelo. The summer is hot with the arrival of a high number of tourists. The suggestion includes night tourist visits to Penha Garcia, Monsanto, Idanha-a-Velha and Idanha-a-Nova, off road visits, spa and cultural activities, hydro gymnastics at the municipal swimming pool and theatre by the D'Orfeu Cultural Association.

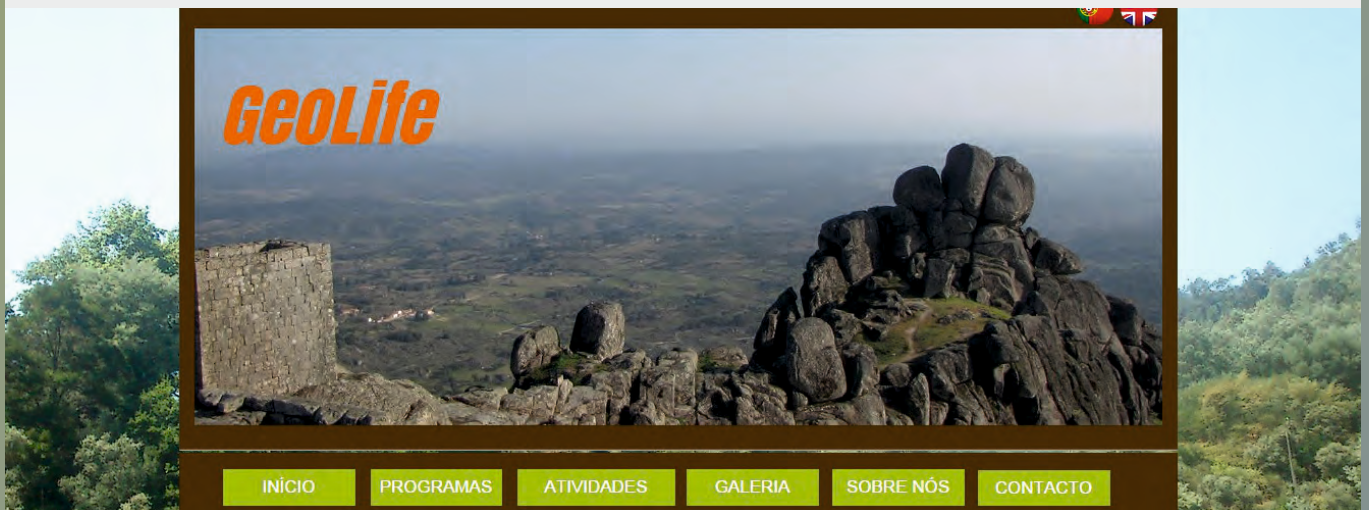


30 July to 11 August - Trans-Pangaea Challenge, 1000 km running between Canada and Portugal.

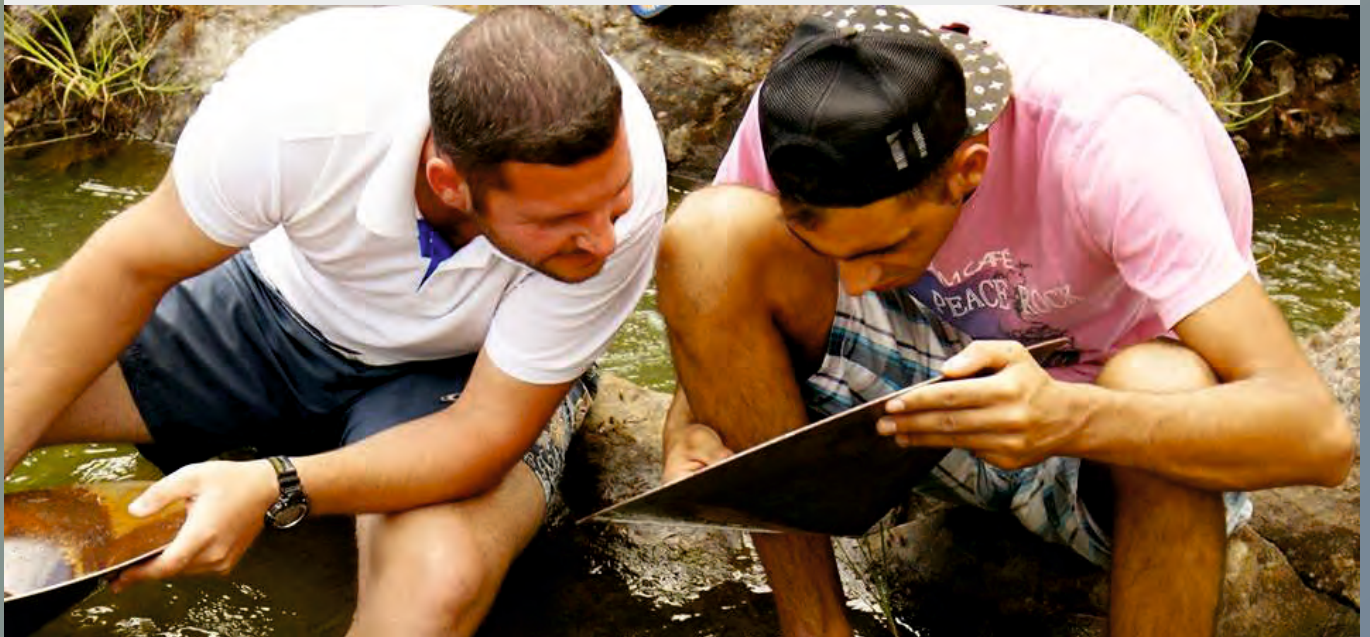
The ultra-marathon Trans-Gaspesian 2014, took place at Gaspé, in Canada, an ultra-trail event in total autonomy with an extension of 260 km along 7 days. This was the first of the real endurance challenges that constitute the Trans-Pangaea Challenge; championship hosted by Land's End Racing at the International Appalachian Trail, between 2014 and 2016. Naturtejo and the Municipality of Oleiros, through their technicians Joana Rodrigues, João Alves and Carlos Lourenço, cooperated in the organization of this first race, being the second one, The Crossroads 2015, hosted in Portugal on the next year, between 19 and 25 April, with several stages in the Naturtejo Geopark Territory, in the Portuguese section of the International Appalachian Trail, in Oleiros. The region representatives had proper training, disclosed the resources of the Naturtejo Geopark assisted by UNESCO, in general, and the municipality of Oleiros, in particular and helped in the logistics of the event in this beautiful region of the Canadian Quebec, amid the national parks of Gaspésie, Forillon and Île-Bonaventure-et-du-Rocher-Percé. It should be noticed that the Gaspé Peninsula, where the start of the Trans-Gaspesian 2014 took place, was considered as one of the twenty highlighted touristic destinations worldwide by the National Geographic Traveller and is a Geopark project.

The Trans-Pangaeian consists in a group of 4 stages totally in autonomy made around the International Appalachian Trail, in the format of 250 km in 7 days, in a total of 1000 km, running through one of the most spectacular trails around the world. These events take place in Canada, Portugal, Greenland and Norway, in territories that once were united forming the supercontinent Pangaea, 250 million years ago. The aim is to unite nowadays these landscapes and mountains "Which have been separated over millions of years by the North Atlantic", stated their hosts. It must be mentioned that the Municipality of Oleiros and Naturtejo coordinate the development of the International Appalachian trail in Portugal, being the municipality of Oleiros, with the support of the local parishes and the Trails of Estreito Association, creating at this moment a trail in the Muradal Mountain, the future Great Muradal-Pangaea Trail.

The ultra-marathon runners, coming from all around the world, will accomplish the race in self-sufficiency along the most spectacular mountain trails, forest and rural paths in Naturtejo Geopark, which are being selected by the organization since March, in partnership with Naturtejo and municipalities of the geopark, with the support of the company "Horizontes", of Proença-a-Nova with large experience in these type of ultra-endurance events.



August - The new company Geolife presents website. A new tourist guides and touristic activities company operating in Naturtejo Geopark was born recently in Monsanto. The demand requires an increasing number of local touristic animation companies with proper qualification and training in the several heritage assets. Susana and Rui chose to come back and live in Monsanto, sharing their knowledge and deep love for this region. Susana studied Enterprises Organization and Management in the School of Management at Idanha-a-Nova and took an internship in the geopark. Their proposals for discovering the territory are now available in www.geolifeturismo.com.



2 August - Geology in Summer finds gold! The Living Forest Science Centre in Proença-a-Nova and Naturtejo Geopark hosted once again a gold finding activity, on the scope of the Living Science at Summer. This is a national science program disclosed for the general public, free of charge. Around 25 participants from all the country came to the banks of the Ocreza River to discover the gold origin and history. The participants could learn the secrets of the gold panning and the majority were able to find their own nugget, which caused great enthusiasm. The approximately 20 gold nuggets were thoroughly analysed in the Living Forest Centre Laboratory and the participants could yet visit the permanent interactive exhibition.



3 to 30 August – Archaeological summer camp of Proença-a-Nova: surprises in a new megalithic monument.

The archaeological excavations in Cabeço da Anta may bring some good news concerning the construction method of this millenary burial place. The second consecutive year of field works brought to the team of six archaeologists the conviction that the grave may prove to be “one of the most emblematic megalithic monuments of the entire Beira Baixa region”, as explains João Caninas, coordinator of the II International Archaeological Field of Proença-a-Nova. For 2015 is already drafted the continuity of the labours, this time with three excavations in three different sites, with different chronology and typology.

Hosted during the month of August, with two groups of 20 participants (of four different nationalities) split in two shifts, the field included this year two working areas. Due to the dimension and complexity, the digging in Cabeço da Anta began in 2013 and it still needs a few more time, while the tapir of Vale do Alvito has been dug in parallel. Integrated in the hiking trail PR1, the intervention on the last one is almost concluded, and it's expected to be valued with the visit of all the interested.

Mário Monteiro, archaeologist and coordinator of the Cabeço da Anta sector, explains that the works during the summer allowed “to reach a rocky shell that defines its constructive system” of that large tumulus. Next year a cut will be made to understand the several layers of construction. “It's like a cake with several flavours spread in layers. When we cut off a slice, we can get all the flavours. That's what we intend to do.” For now, have been noticed that this is a tapir with nine mainstays – more that the common chamber model with seven mainstays.

While the investigation is the primary goal of the excavation, the initiative also ends by having an educative focus, allowing the students to have field trips that normally the Universities cannot offer. As João Caninas explained, will begin in the next weeks the approach to the foreign universities, in order to allow them to insert in their annual schedule the field camp of 2015. This work camp had several trips through the Geopark hosted by the municipality of Proença-a-Nova, with particular highlight to the Portas de Rodão Natural Monument and the Talhadas Mountain, where in the 20 and 25 of August archaeologists and students were guided by Carlos Neto de Carvalho in the subject of natural landscape interpretation.



6 to 9 August – Geopark & friends in the Pinewood Festival of Oleiros

6 to 9 August – Geopark & friends in the Pinewood Festival of Oleiros. Once again Naturtejo Geopark was present in the Pinewood Fair, at Oleiros, in one of the most attended local fairs. This time, Naturtejo Geopark and its associate S. Torcato-Moradal – Rural Tourism attended with their stands side by side, in a demonstration of cooperation and mutual assistance. Sérgio Ribeiro coordinated the Naturtejo Geopark presentation and welcomed hundreds of people. Naturtejo Geopark gave also support in the disclosure of the Geomonument Fraga da Água d'Alta at the village of Orvalho stand. On Saturday, a time trial stage of the Tour of Portugal in Bicycle went through Oleiros, bringing hundreds of people to the municipality streets and roads and the public television RTP1 made a live show in the town. Paulo Urbano, councillor in the Municipality of Oleiros, was interviewed and spoke about the strategies for the regional development, namely the Naturtejo Geopark.



9 August – More than 200 “smugglers” cross the border to Spain. More than two hundred people recreated the ancient smuggling routes, in a cross-border pedestrian walk that connected the village Salvaterra do Extremo, in the municipality of Idanha-a-Nova, to Zarza La Mayor, in the Spanish Extremadura region.

Was at sunset that the group of hikers, equally divided between Portuguese and Spaniards, walked through paths that once the smugglers stepped, loaded with coffee for deliver in the other side of the border.

The participants followed the steps of a former local smuggler. Playing the role of guide, José Joaquim Rascão shown paths and told stories of courage immortalized in the region. Those were times that the smuggling, although illegal, existed as a crucial activity for the survival of the border population, with the protagonists risking themselves playing “cat and mice games” with the Portuguese and Spanish authorities.

The walk, with an extension of 7km and with the usual crossing of the Erges river, was ideal to share memories and pleasant moments, among stunning scenarios, making this activity a great success, year after year.

The initiative “Smuggling in Border Lands” was hosted by the Municipality of Idanha-a-Nova, the Parish Union of Monfortinho and Salvaterra do Extremo, the Cultural, Recreational and Social Association for Development of Salvaterra do Extremo and the Municipality of Zarza La Mayor (Spain), with the support of Naturtejo Geopark.



14, 20, 21 and 27 August – workshop “Making my recycled paper”. In this workshop attended 21 children and 2 monitors from the free-time occupation program of Penha Garcia, 20 children and 3 monitors from Idanha-a-Nova, 12 children and 2 monitors from Rosmaninhal and 13 children and 2 monitors from S. Miguel D’Acha. The main goal was to sensitize the kids for the waste collection and separation and promoting the recycling of different types of materials, paper in particular. Thus, the waste separation game was created and afterwards took place the production of recycled paper sheets and some of them were even decorated. The monitors were Hugo Oliveira and a technician from the Municipality of Idanha-a-Nova.

16 August – Celebration of the 14th anniversary of the International Tagus Natural Park.

The village of Segura, in the municipality of Idanha-a-Nova, was the chosen stage for the celebrations for the 14th anniversary of the International Tagus Natural Park. This event was flagged by the Institute of Conservation for Nature and Forests supported by the Municipality of Idanha-a-Nova and Naturtejo Geopark, with an “open day” at the park. The program included the signposting inauguration in this protected area, now concluded in the three enclosed municipalities: Idanha-a-Nova, Vila Velha de Ródão and Castelo Branco. Then, was followed a visit guided by Hugo Oliveira to the “Biodiversity Interpretation Centre –Lands of Idanha”, located in the former Border Guard Post, and a birdwatching thematic trail passing by the Erges Fluvial Gorge Geomonument area. In this day were yet stressed the activities energized by the Educational Activity Service of the Idanha-a-Nova Municipality in partnership with Naturtejo Geopark during the last year, namely through the Field Trip “The Bio and Geodiversity of the Erges Fluvial Gorge” for all the students of the Nursery School Teaching and Primary School Teaching of the Idanha-a-Nova Municipality.



24 August – Talk at the Proença-a-Nova downtown. Carlos Neto de Carvalho was invited, in the scope of the Archaeological Work Camp 2014 in Proença-a-Nova, to talk at Proença-a-Nova downtown for all the participants and general public, about the Rocks, existing cells in the natural and humanized landscapes of Naturtejo Geopark assisted by UNESCO. The rocks, as main features of a natural landscape and raw material for Man, represent a study basis for several sciences, such as the Geosciences or Archaeology.

Just as the Geosciences allow to understand the formation and historical evolution of the Earth, to know how to interpret the rocks and minerals, or the fossils and the landforms of an area, allow to not only avoid some basic interpretation mistakes that soon take down the structuring of a thesis, but also to open new horizons in the diverse archaeological fields, from the Landscape Archaeology and Geoarchaeology to the study of the metallurgical process and the Economic Archaeology. Identifying minerals and rocks, as well as its dating, is nowadays more easy due to the utilization of geochemical methods with technology and costs not always affordable. On the other hand, in the field works there are prompt methods easily applicable that allow the identification of minerals and rocks in a satisfactory, accurate way. In this presentation Carlos Neto de Carvalho seek, in a practical and casual way, to review and apply knowledge related to the rock and mineral identification, with potential application in archaeology, as well as to discover some tricks about how to identify them. Were yet explored some practical cases of misinterpretation that resulted, not only in mistakes of geological structures description and interpretation, but also the lack of interdisciplinary and communication between the geosciences and the archaeologies, which gradually begins to be fought. The addressed examples make a small journey through Portugal, but they're not limited to our country and their focus is the Naturtejo Geopark of the Meridional Meseta, the first geopark recognized by UNESCO in 2006. Therefore, the study cases of this workshop allowed to rebuild in a theoretical way the most important geological landscapes of the geopark, some of them were discovered by the participants of the Archaeological Field Camps in Proença-a-Nova through guided field trips to some of its geomonuments.



29 August - Field trip "Let's take care of the Ponsul river". In this activity were present 26 children and youngsters followed by 4 monitors of summer free-times of the Idanha-a-Nova Municipality. This activity energized by Hugo Oliveira with the technical support of the Idanha-a-Nova municipality consisted in a trip to the Marechal Carmona Dam where the children could learn and/or remember the importance of this and other dams in the water distribution for irrigation, electric energy production and also the leisure moments associated with sporting activities, boat trips, picnics, among others. In a route made around the reservoir bank, the youngsters and the monitors proceeded to the garbage removal in an initiative that promoted the improvement of the local environmental quality. The last part of the field trip consisted in a guided tour, made by a technician from the Culture and Development Municipal Centre of Idanha-a-Nova, to the several areas of the Idanha-a-Nova campsite, located next to the referred dam.



IMPACT OF GEOPARK IN MEDIA

TV

9 August (RTP1 Verão Total Live show) – Live show from Oleiros with interview to Paulo Urbano about tourism and the geopark, among others

Newspapers & www

1 August (Ensino Magazine) – Meeting the curious landforms of Gardunha
August (Oleiros Magazine's headlines) – Rural Tourism may be the solution
August (Oleiros Magazine) – Oleiros in the Appalachian Trail
5 August (Povo da Beira) – Night walk in the old smuggling paths
6 August (Gazeta do Interior) - Salvaterra de Extremo in the Smuggling path
13 August (Gazeta do Interior) – International Tagus Natural Park launches panels
13 August (Gazeta do Interior) – More than 200 people smuggling by the border land
19 August (Povo da Beira) – Trans-Pangaea Challenge, 1000km running between Canadá and Portugal
19 August (Povo da Beira) – International Tagus Natural Park celebrates 14 years
19 August (Povo da Beira) – More than 200 people smuggled by the border lands
20 August (Gazeta do Interior) – Naturtejo Geopark celebrates cooperation agreement with Chinese geopark
20 August (Gazeta do Interior) – Oleiros and Naturtejo involved in the organization
21 August (Reconquista's cover page) – China cooperates in tourism...and seduces enterprisers
21 August (Reconquista) – One thousand kilometers running between Canada and Portugal
21 August (Reconquista) – Cooperation agreement with China
21 August (Reconquista) – Adufes blanket come to London
21 August (Reconquista) – Smuggling time
26 August (Povo da Beira's cover page) – Naturtejo Geopark and a Chinese geopark sign cooperation agreement

SCIENTIFIC CONTRIBUTIONS FOR THE GEOPARK AND THE GEOSCIENCES



- Pereira, D. & Pereira, P. (2014) – Relevo no âmbito da inventariação do património geológico português. *Geonovas*, 27: 77-82.
- Vilão, A. & Simão, J. (2014) – Inventário de locais e actividades com interesse geológico no ensino das Geociências. *Geonovas*, 27: 101-110.
- Caninas, J.C., Monteiro, M., Pereira, A., Carvalho, E., Henriques, F., Gomes, J.A., Fernandes, L. & Batista, A. (2014) - The mound at Cimo dos Valeiros (Serra Vermelha, Oleiros, Castelo Branco). A Neolithic burial site in the Central Cordillera, south of Serra da Estrela. In: Cruz, A., Cerrillo-Cuenca, E., Ramírez, P.B., Caninas, J.C. & Batata, C. (eds), *Rendering Death: Ideological and Archaeological Narratives from Recent Prehistory (Iberia)*. BAR International Series, 2648: 45-59.



PROMOTION FOR THE GENERAL PUBLIC

- Proença-a-Nova Archaeological Summer Camp. Ed. of the Municipality of Proença-a-Nova/Association for the Studies of the High Tagus (booklet in Portuguese language)
- Geo BTT (brochure on two new mountain bike tracks in both Portuguese and English languages).

Vinho Callum

Para além da casta Callum ou do sistema “enforcado”, existem muitos mais arcaísmos que importa preservar, como a história que tem para nos revelar, a tipicidade das adegas ou os espaldares de madeira, por exemplo.



Por todos os motivos, este vinho, sendo biológico na sua essência, pode também ser caracterizado como: histórico, um **arcaísmo vitivinícola** e segundo o Professor Virgílio Loureiro “um **tesouro antropológico**”.

O Callum é um vinho único, de elevada originalidade e que deve ser apreciado *in loco*, preferencialmente nas típicas adegas em xisto que existem no território, algumas das quais ainda exibem os seus ancestrais lagares em pedra, com a famosa prensa de Catão (vara e fuso), introduzida pelos romanos e divulgada pelos monges da Idade Média.



Geleia de Callum, uma inovação

Depois da Sangria de Callum, apresentada na penúltima edição da Feira do Pinhal, no stand da Câmara Municipal, o Município de Oleiros promove agora mais uma inovação associada a este vinho histórico de Oleiros: a Geleia de Callum (uma geleia vínica, neste caso feita a partir de um vinho branco (o Callum) que apresenta um aspeto semitransparente e uma consistência gelatinosa garantida pelas pectinas).



Vinho Callum

OLEIROS

“um emocionante vinho histórico”

“um arcaísmo vitivinícola”

“um tesouro antropológico”



oleiros

ALGARVE

naturtejo

ALGARVE



Natureza

Percursos na natureza

Observação de aves

Dias de aventura

Percursos na natureza

Nos Parques e Reservas Naturais há trilhos marcados para percursos a pé ou de bicicleta.

No Algarve, a Via Algarviana percorre o interior da região, destacando os pontos de maior interesse. Na Madeira, seguir as levadas de água são uma forma única de conhecer a ilha e de contacto com a natureza.

Links úteis

Parques e Reservas Naturais: www.icnf.pt
Geoparque de Arouca: www.geoparquearouca.com
Geoparque Naturtejo: www.naturtejo.com
Via Algarviana: www.viaalgarviana.org
Rota Vicentina: www.rotavicentina.com
Trilhos dos Açores: www.trilhos.açores.com
Levadas da Madeira: www.vismadeira.pt





PROMOTION FOR THE GENERAL PUBLIC

Geopark Naturtejo da Meseta Meridional,
bajo los auspicios de la UNESCO (Portugal)



600 millones de años de histórias
y paisajes para descubrir



Exposición
3 – 31 de Octubre

Tierra de Fuego - Senderismo - Viajes
Travesía de Conde Duque, 3, 28015 Madrid




Concentração no largo da Junta de Freguesia de Estreito-Vilar Barroco
N 39 57,134 W 7 48,324

24 e 25
Outubro

ROTA LANDGEOSSITOS 2014

2ª edição
Passeio Todo-o-Terreno

21:00 Recepção dos participantes
Magusto (Junta de Freguesia de Estreito)

09:30 Início do passeio em caravans e track GPS, com visita aos Geossítios da Serra do Moradal e apresentação do Trilho Internacional dos Apalaches.

13:30 Almoço no Parque de Merendas do Mosqueiro (oferta da Junta de Freguesia de Orvalho)

16:30 Prova de aguardente de medronho

18:00 Jantar no Hotel Sta. Margarida

Inscrição: adulto 15€, pessoa criança até 12 anos 7,5€

***HOTEL...
Santa Margarida

Landman CLUB DE PORTUGAL

CRILHOS DO ESTREITO

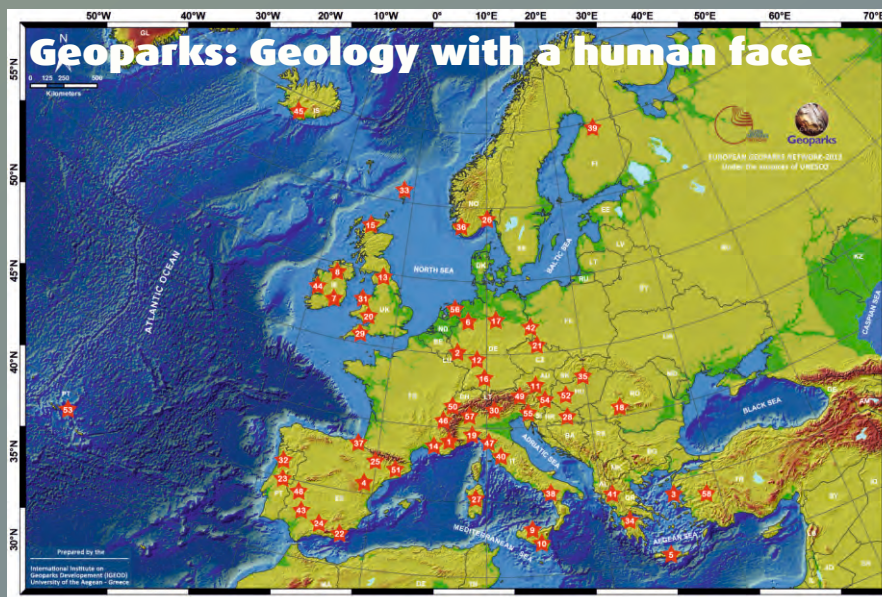
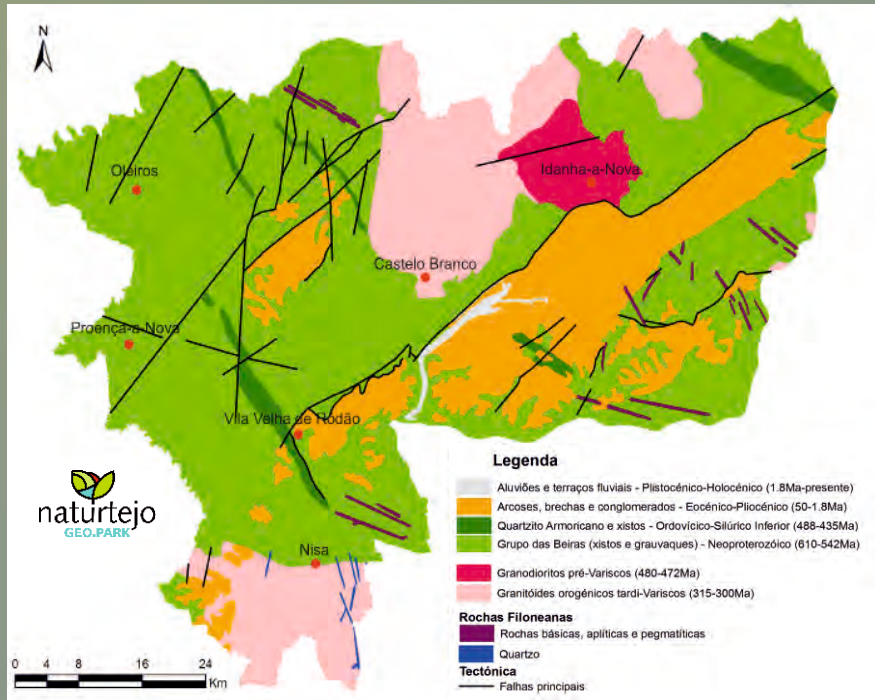
ORVALHO

ESTREITO VILAR BARROCO

oleiros

naturtejo Geopark





CRUZIANA

GEOPARK NATURTEJO DA MESETA MERIDIONAL-EUROPEIA AND GLOBAL GEOPARK MONTHLY REPORT

www.geoparknaturtejo.com